

# Cardiology in Malta Today

Robert G. Xuereb  
Cardiology Update for Family Physicians  
11<sup>th</sup> October 2023



Over the past 10 years  
Cardiology in Malta  
has experienced  
a major revolution



# Super Specialized



# Interventional Electrophysiology / Pacing Clinical Imaging



# Coronary Artery Interventions

## Structural Heart Interventions

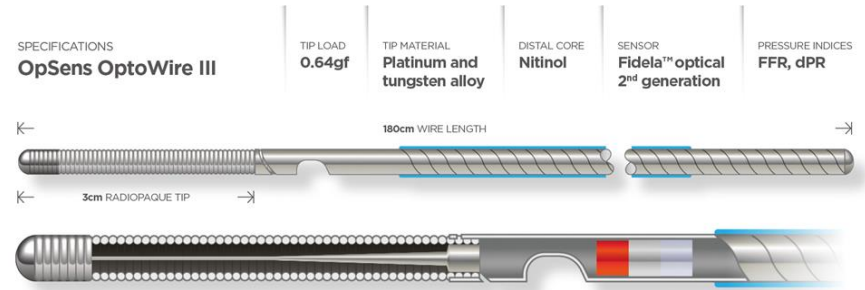
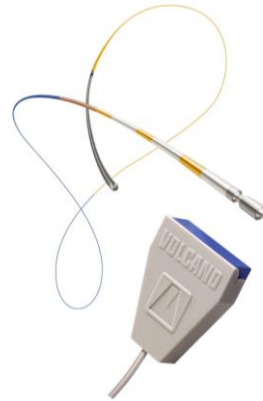


# Coronary Artery Interventions

---

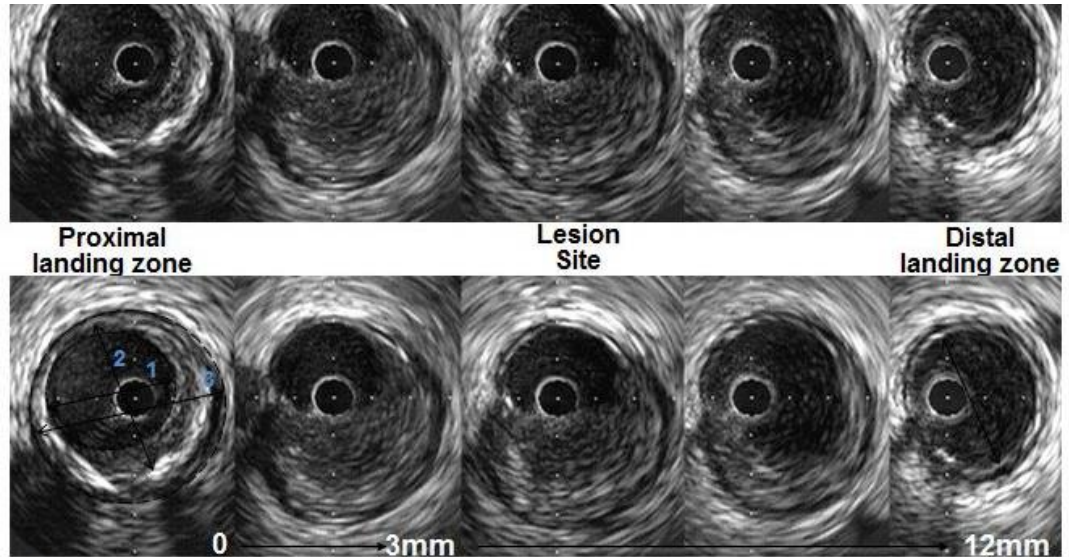
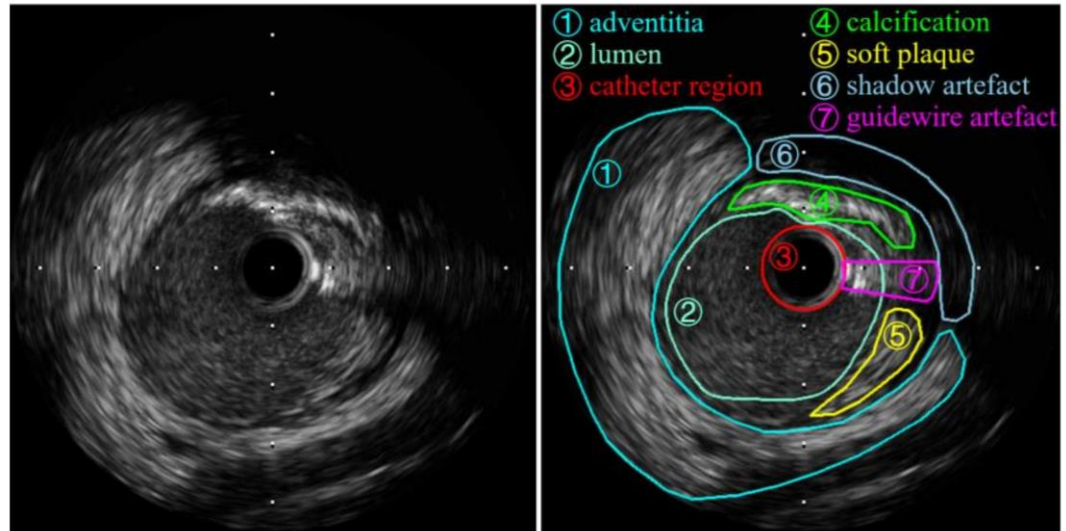


# Physiological assessment of lesions





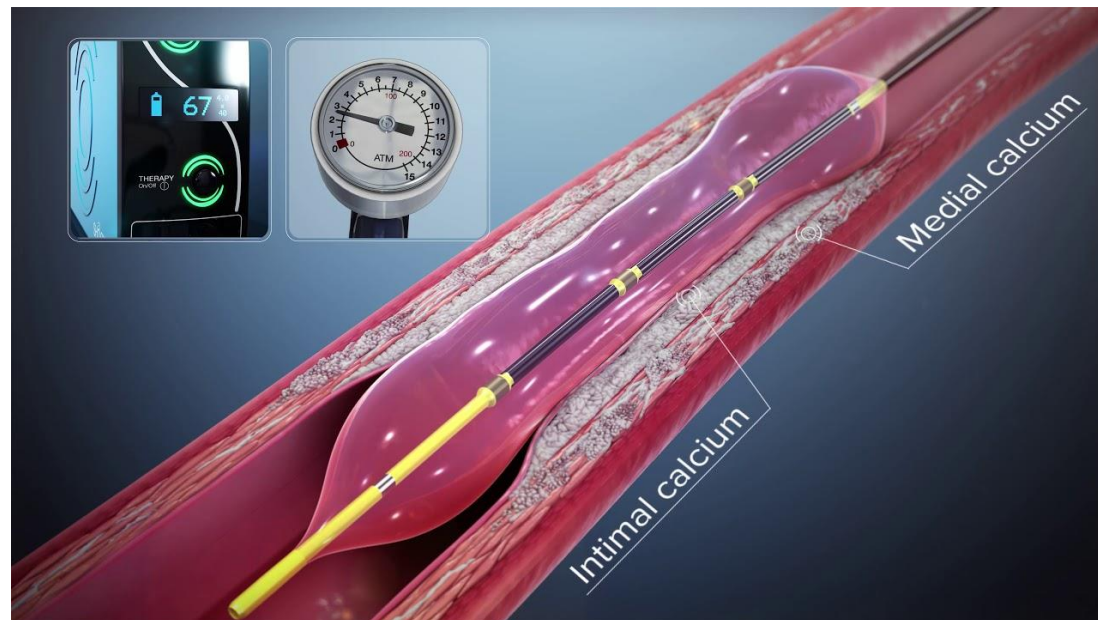
# Look at the Coronary Arteries from the inside



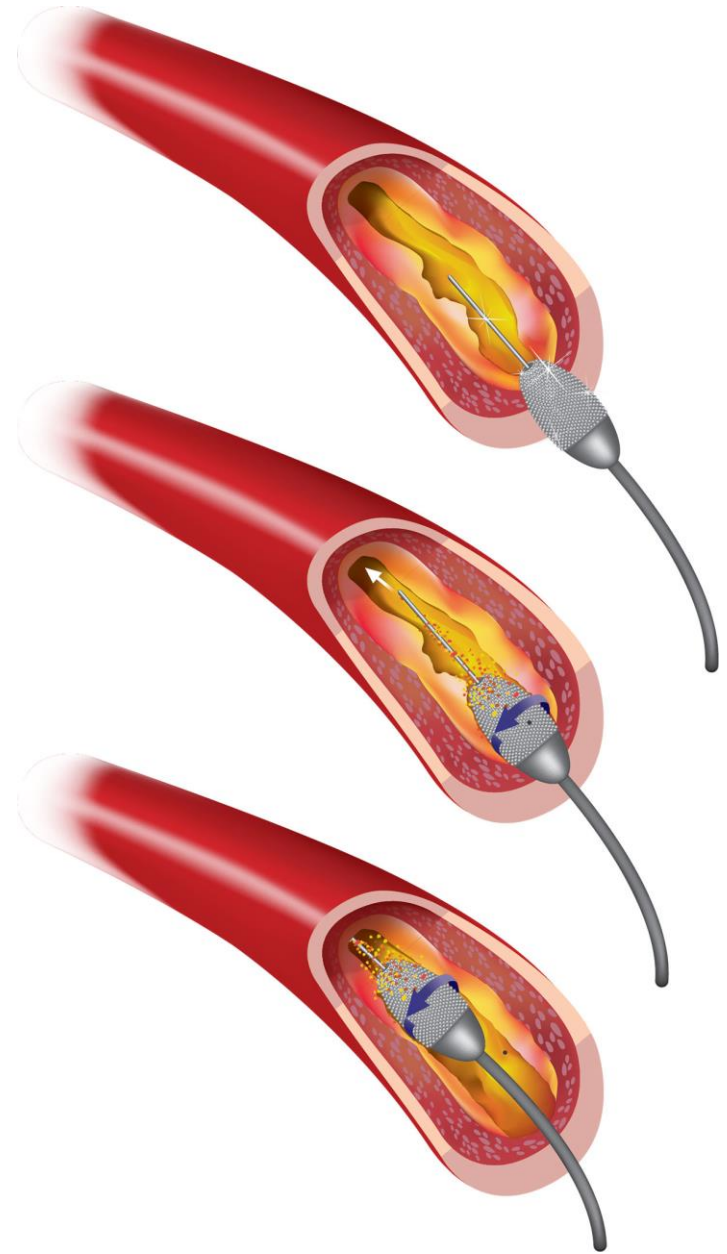
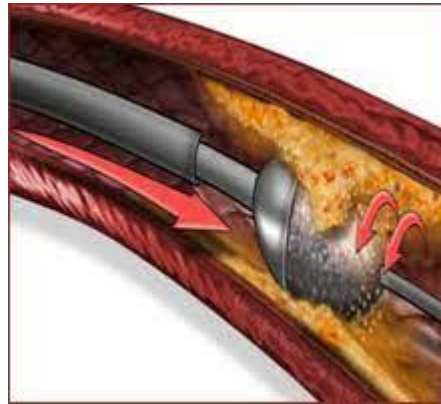
- Increasingly aggressive ↓
- 1) Largest reference lumen whether proximal or distal
  - 2) Midwall
  - 3) Media-to-media (although this is often “discounted” by approximately 0.5 mm)



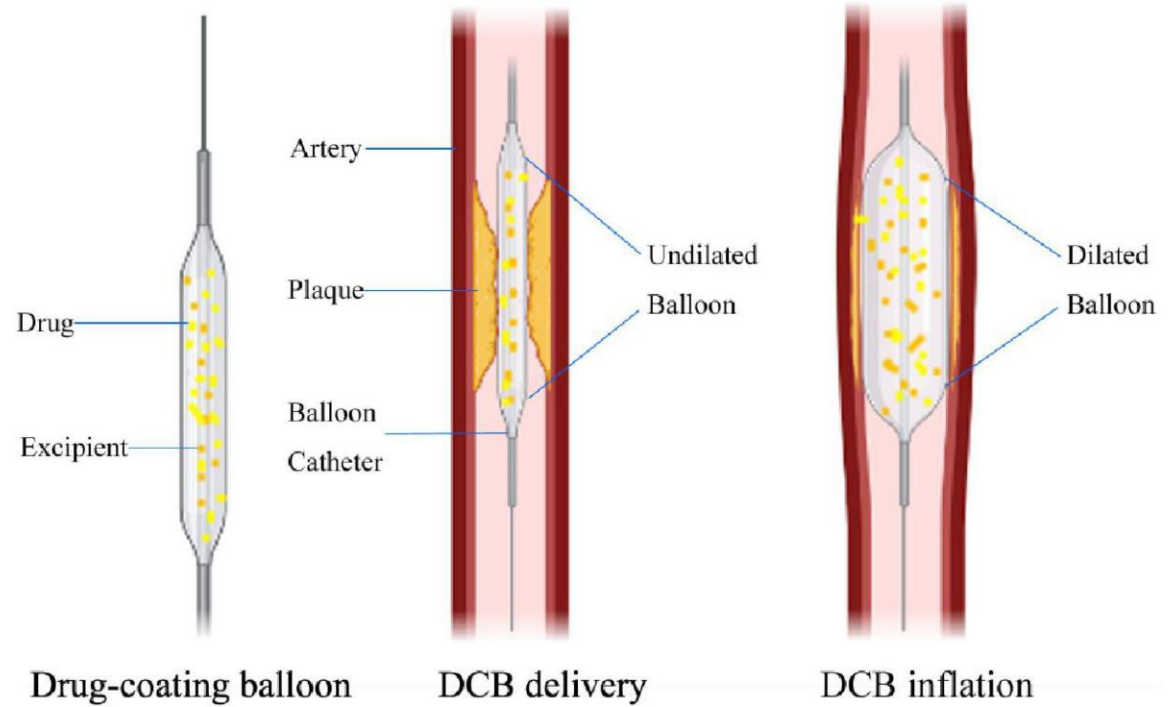
# Calcified lesions – IVL



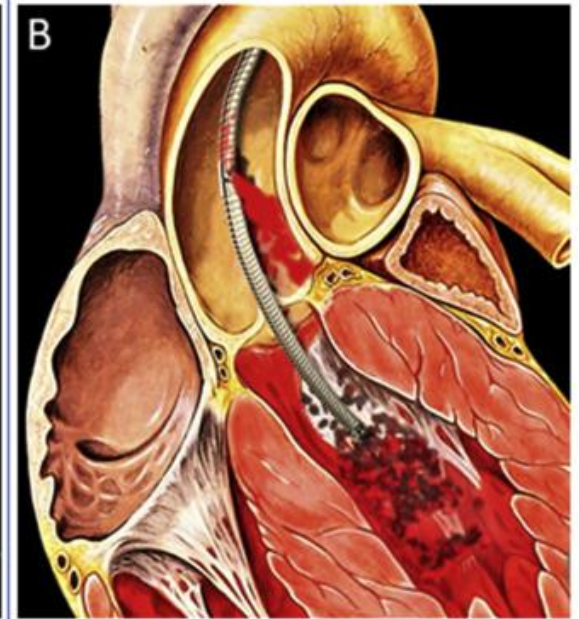
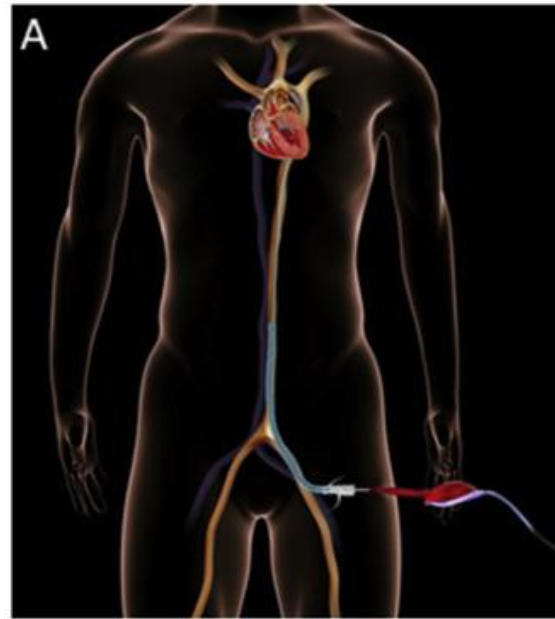
# Calcified lesions – Rotablation



# Drug-Eluting Balloons



High risk  
PCI under  
left  
ventricular  
support



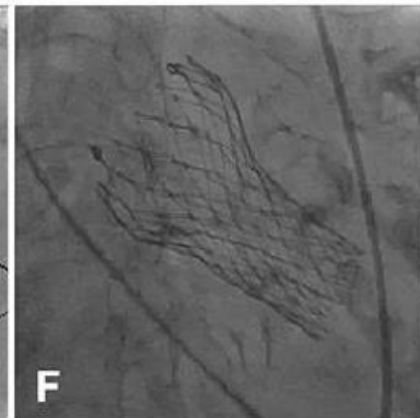
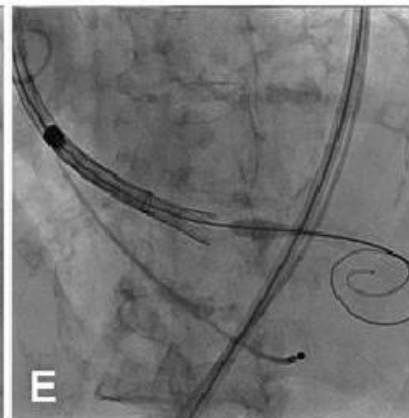
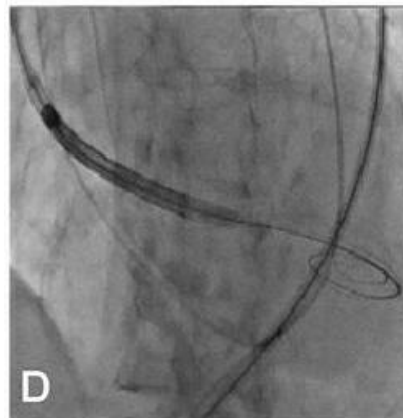


# Structural Heart Interventions

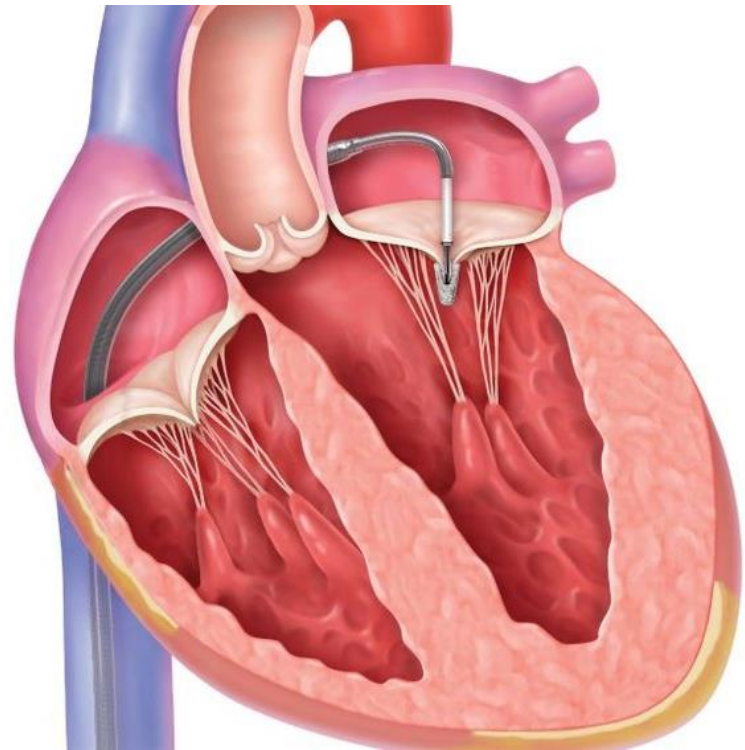
---



# TAVI



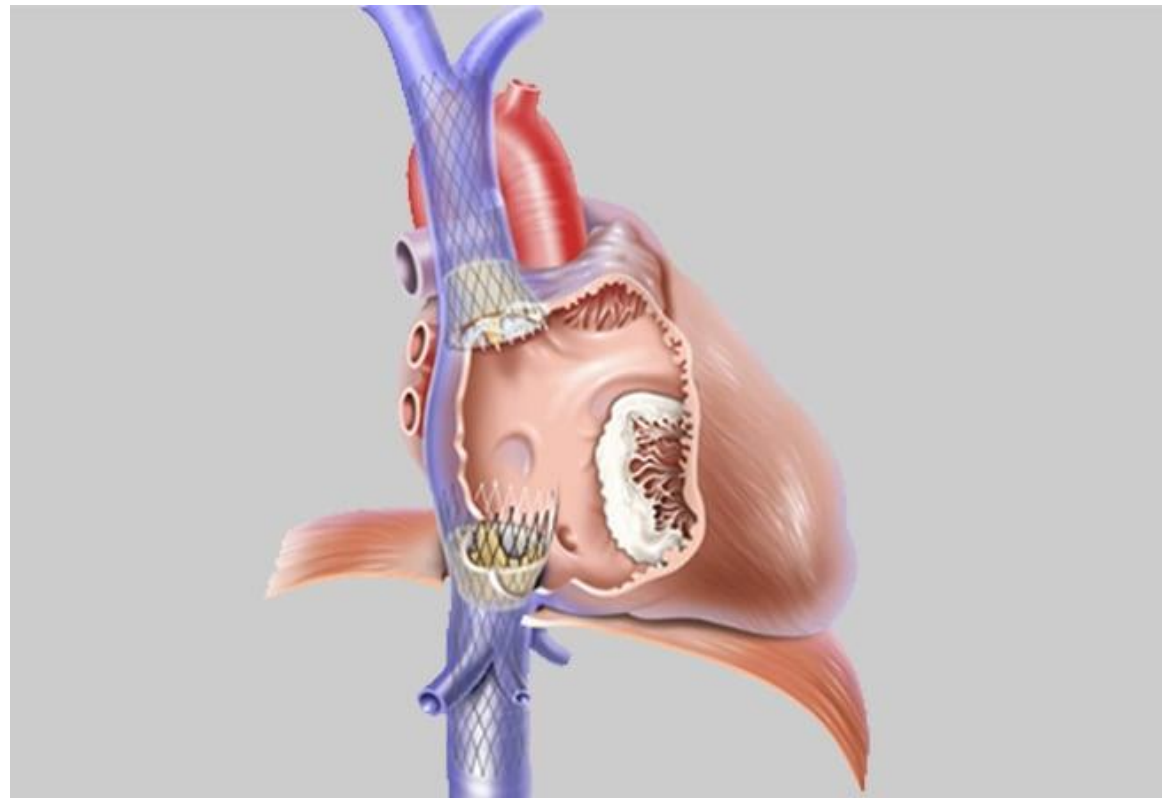
# MitraClip



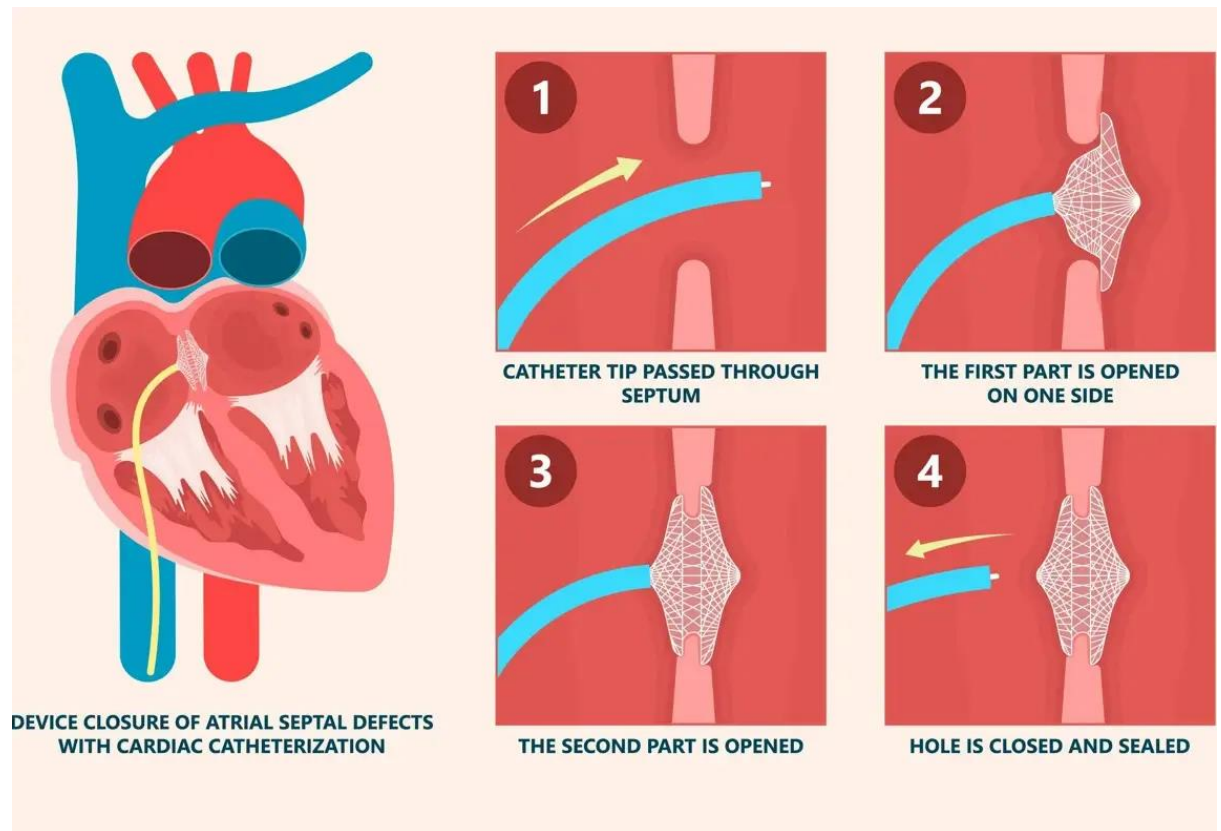
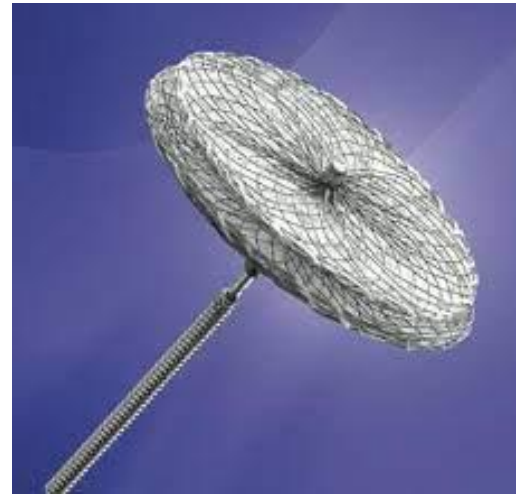




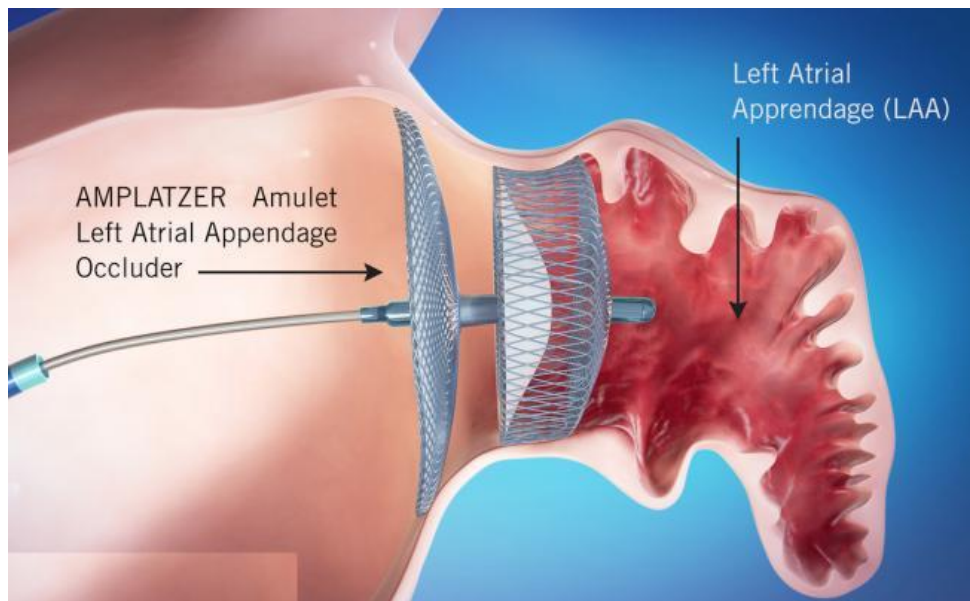
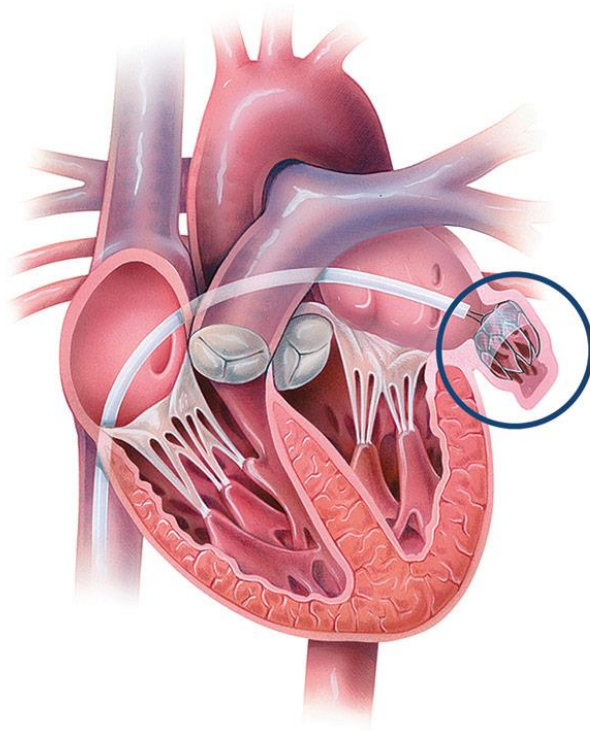
# TricValve

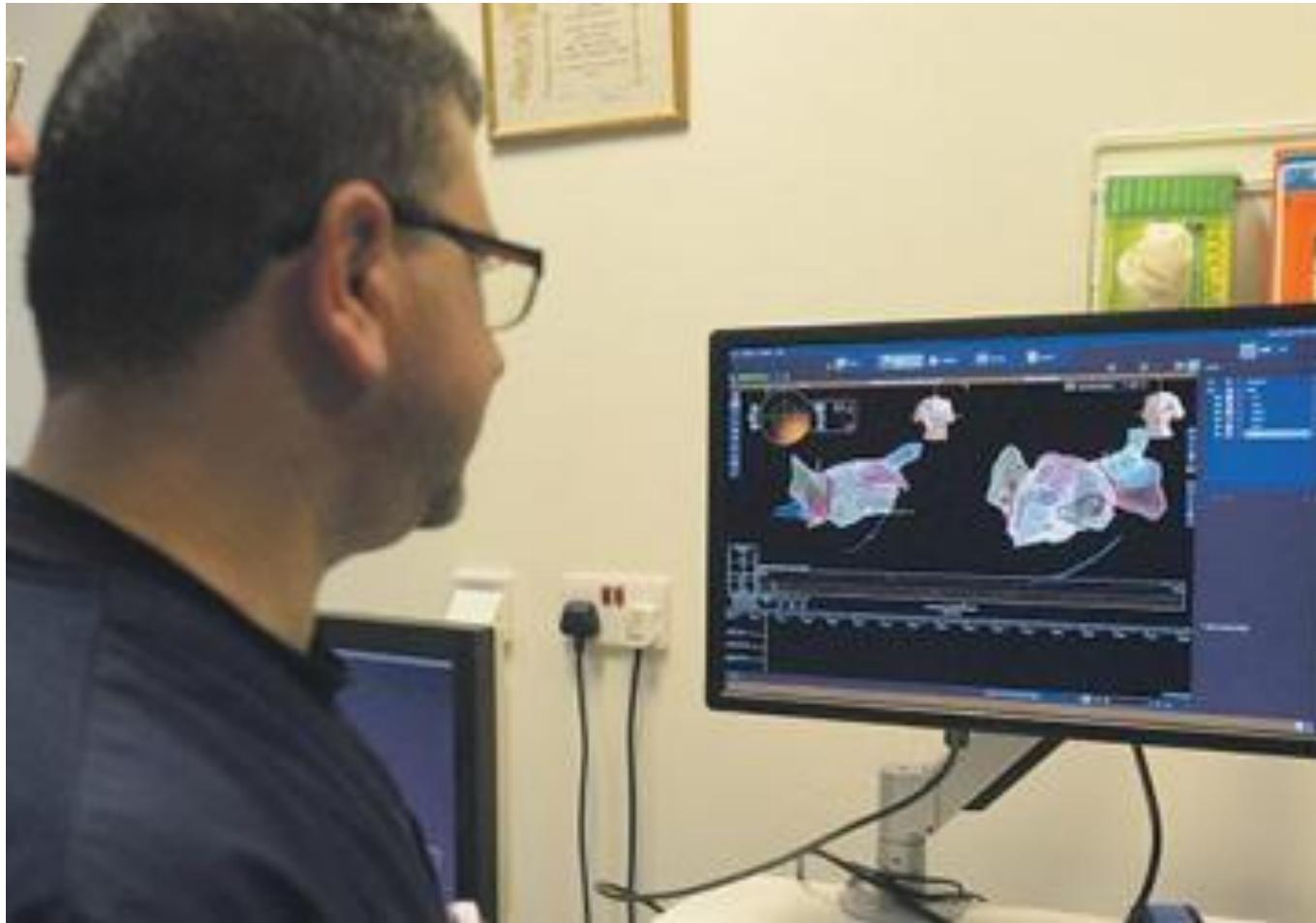


# PFO, ASD, VSD closure



# LAA Occlusion

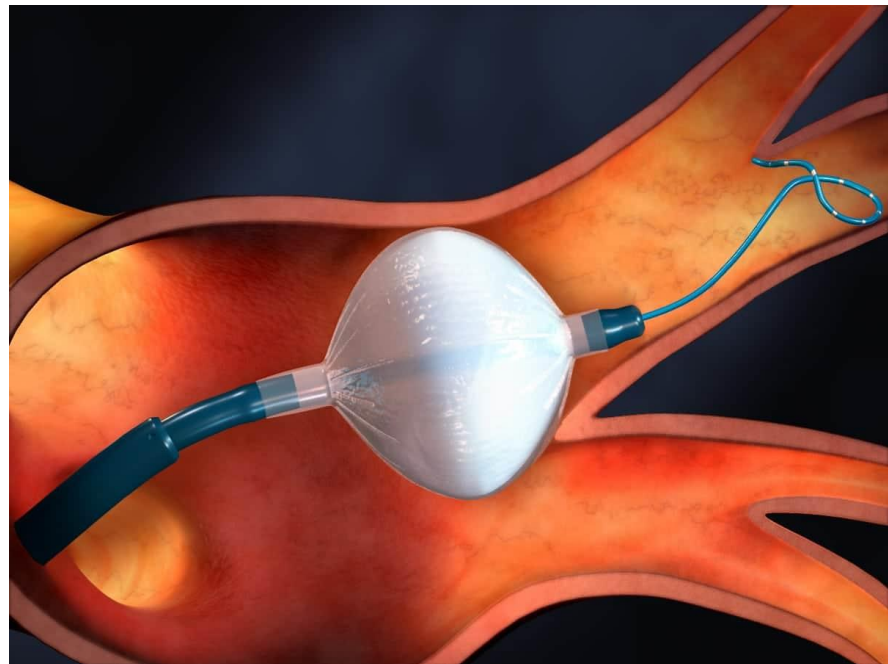
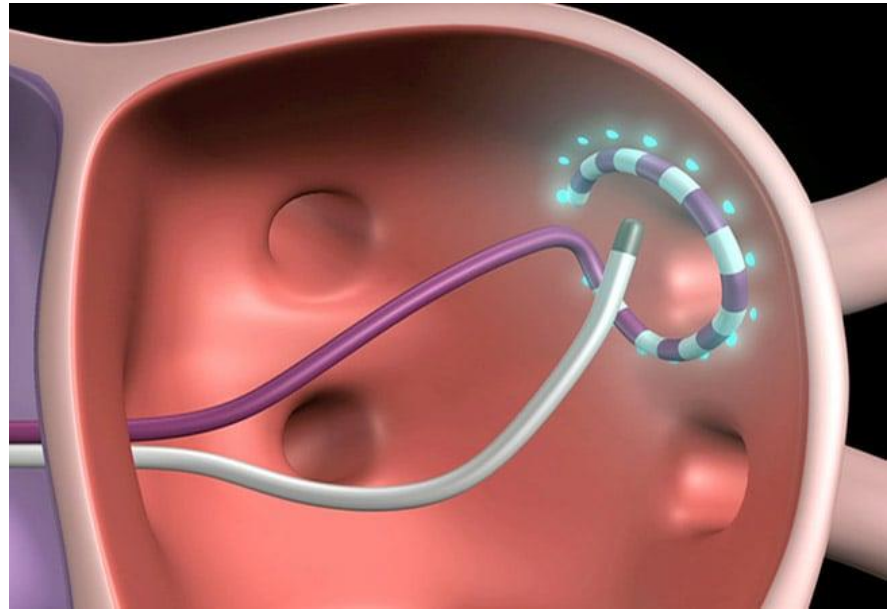




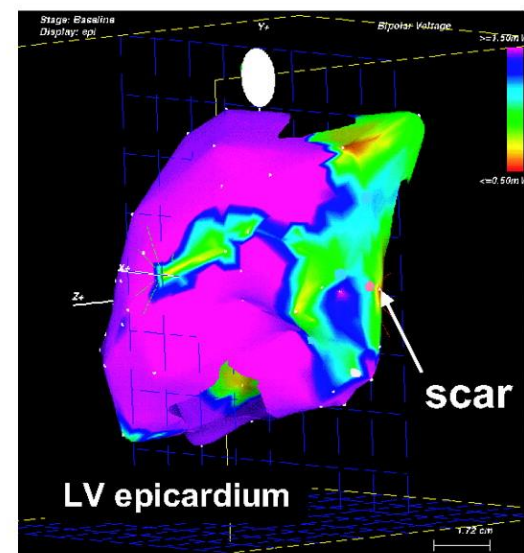
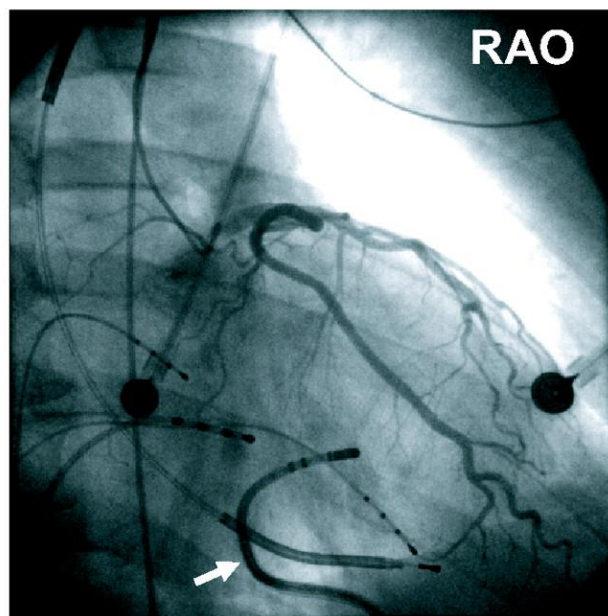
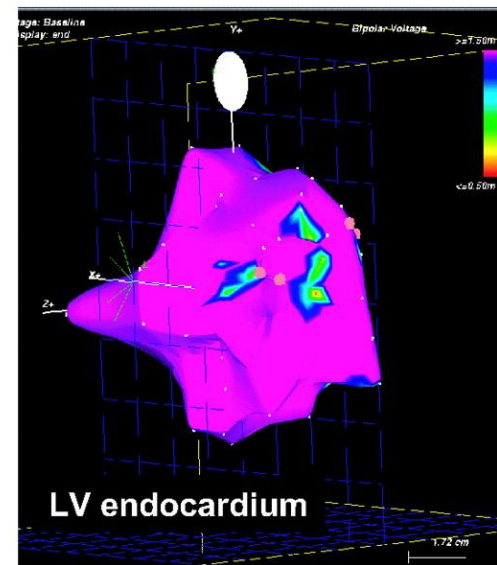
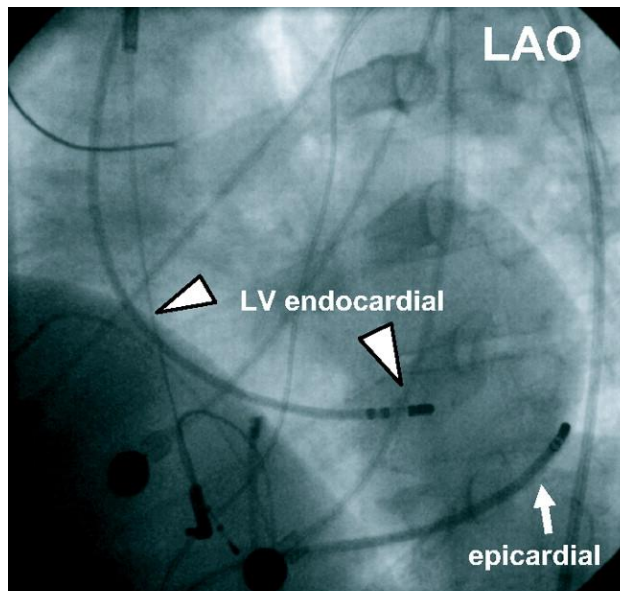
Electrophysiology / Pacing



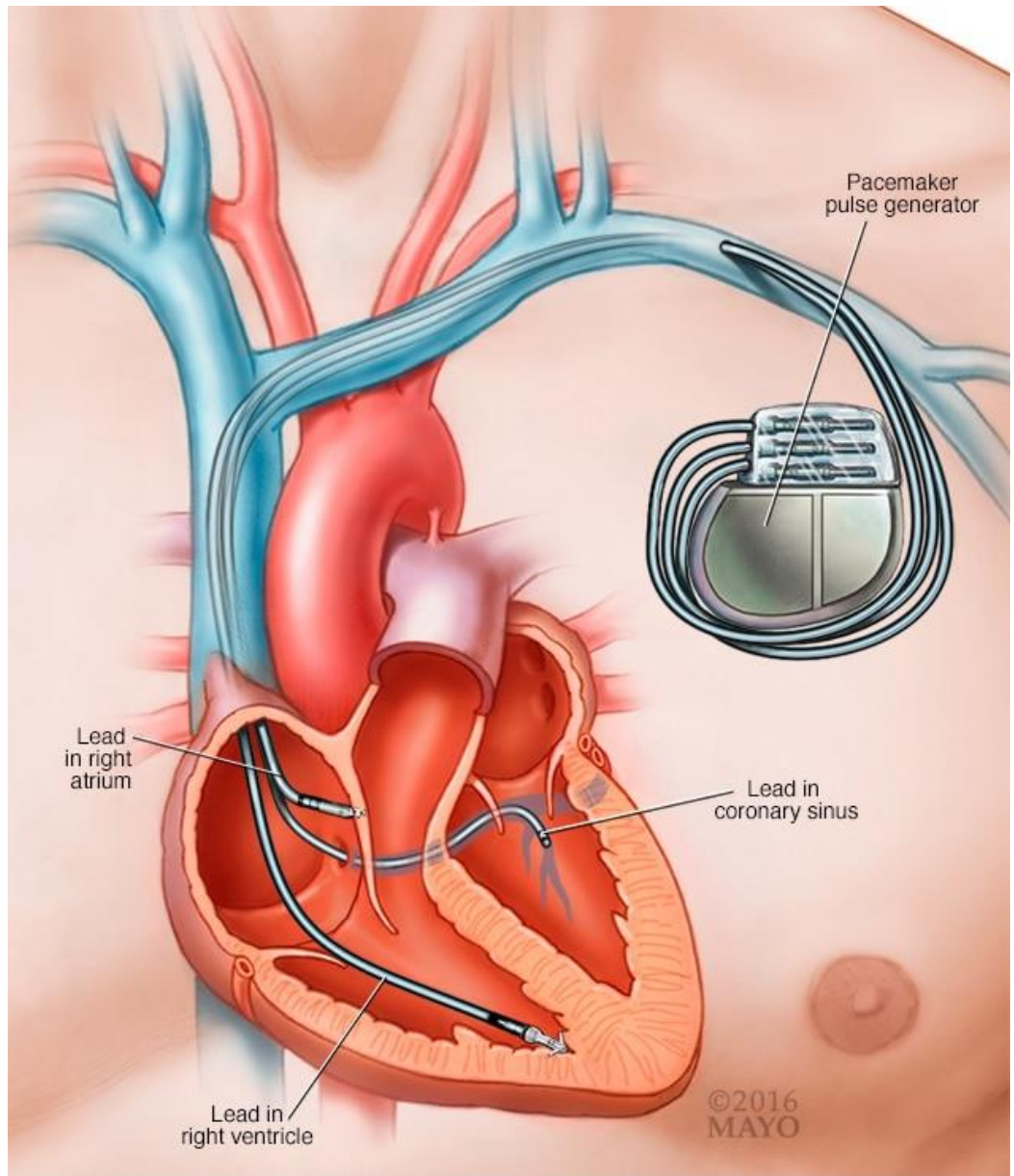
# AF Ablation



# VT Ablation



# CRT-D Pacemakers

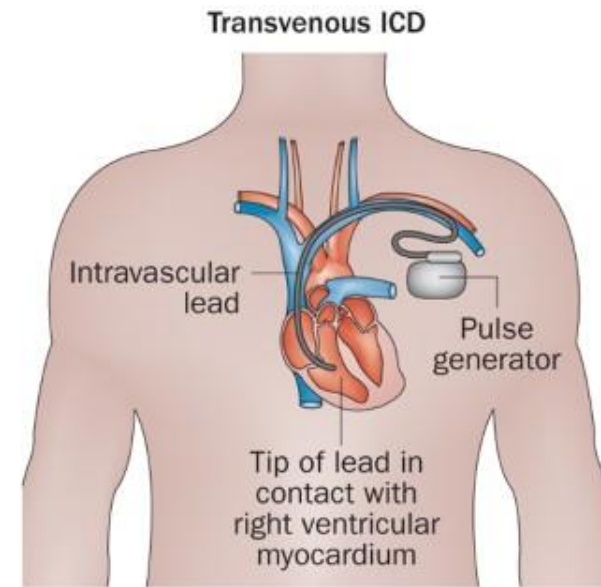
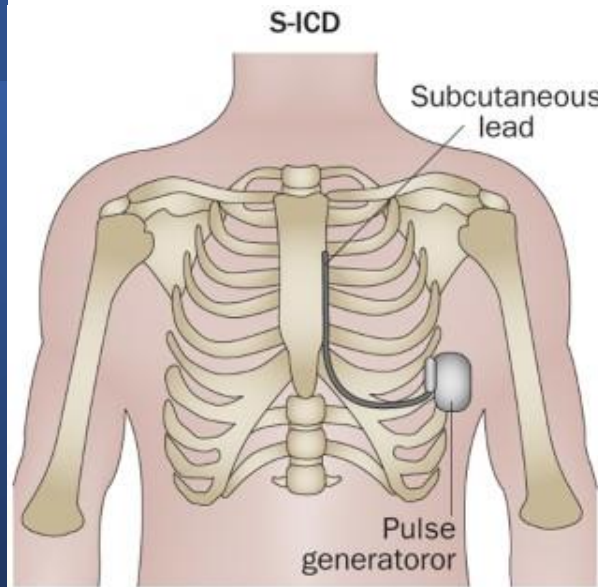




# Leadless Pacemakers




# Subcutaneous Implantable Defibrillators



# Clinical Cardiology





---

# Advanced Cardiac Imaging

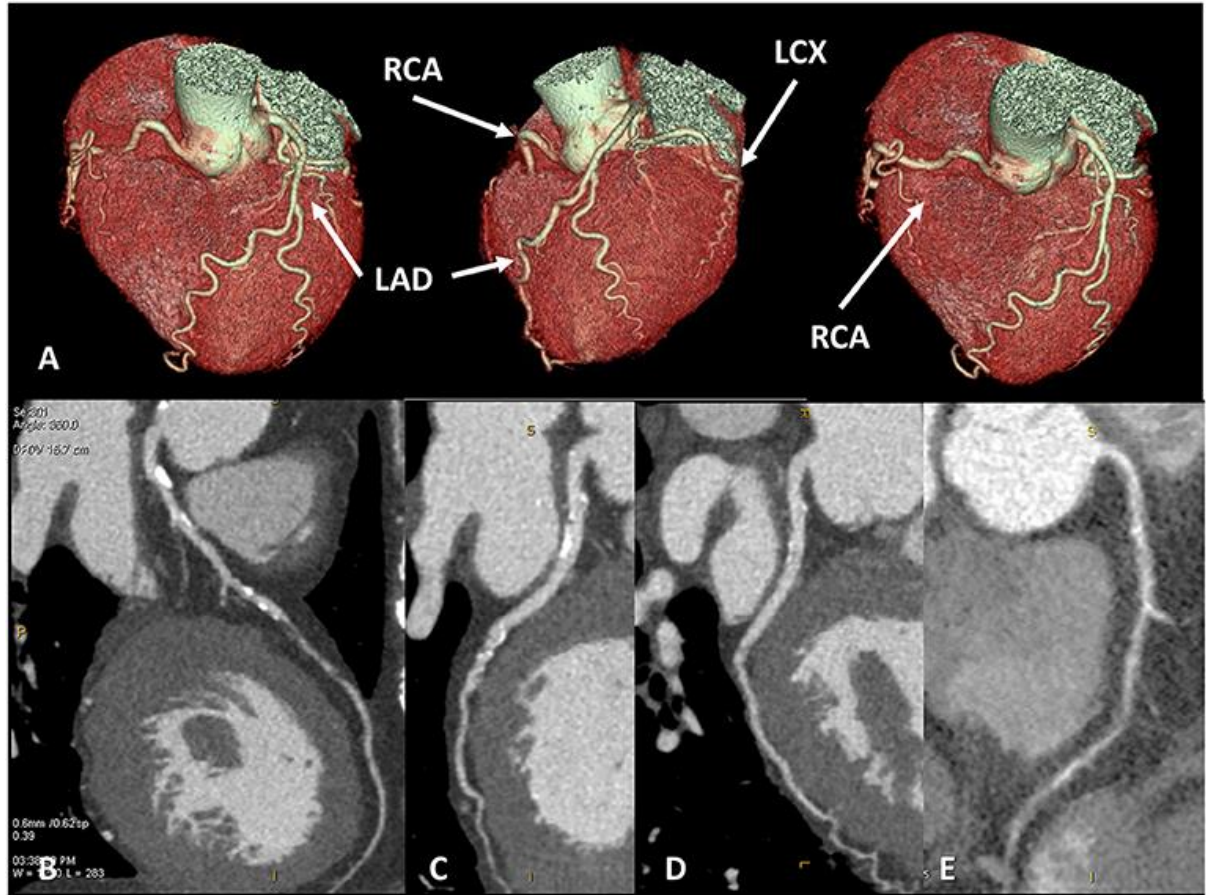




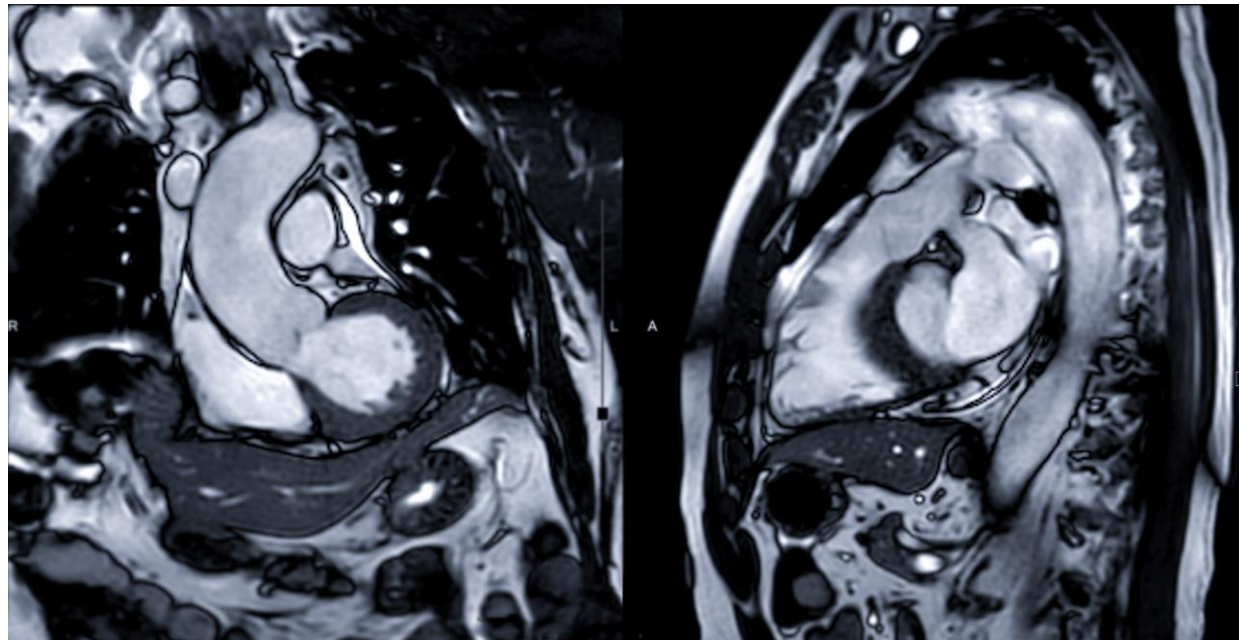
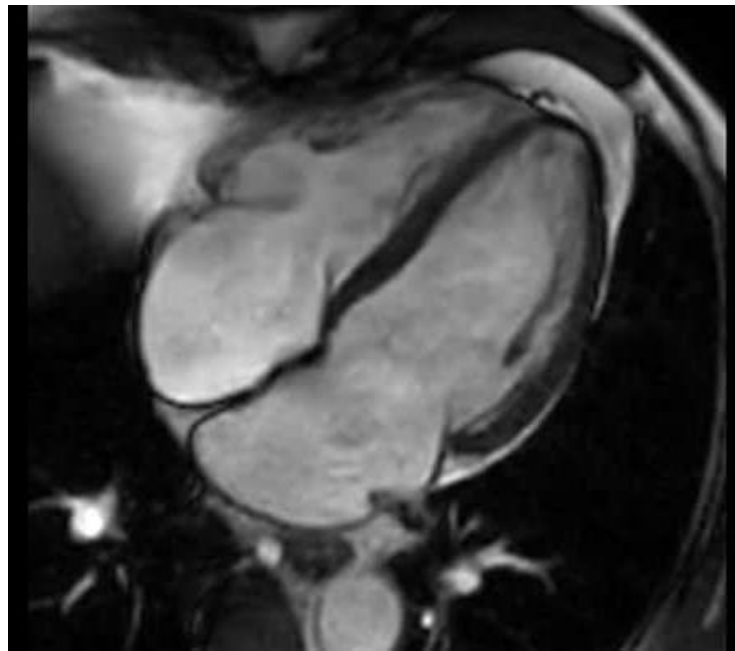
# Stress Echocardiogram



# Cardiac CT CTCA



# Cardiac MR





Thank you

For being with me over  
the past 11 years